

NATURE . WILDLIFE

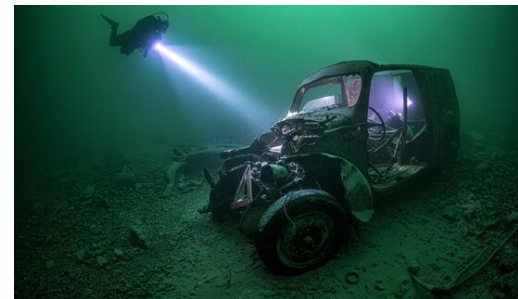
LAKE LIFE – SECRETS BENEATH THE SURFACE

2 × 52' (ENG), 2 × 45' (GER)

Dive into the deep blue and explore some of Germany's and Austria's most captivating lakes!

From pristine mountain lakes to mysterious volcanic craters, this documentary uncovers hidden underwater worlds and geological wonders. Using state-of-the-art underwater cameras and drones, the team discovers unique ecosystems and species, such as crabs in a lake that sometimes vanishes, sulfur-eating bacteria that give certain lakes a striking purple color, the romantic lives of Bitterlings and the elusive Burbot, a fish that has lived in these waters since the Ice Age. Surprising historical artifacts also emerge, revealing human presence beneath the surface. Each episode delves into the origin, biodiversity, and distinctive characteristics of these extraordinary lakes, offering never-before-seen footage of life below the surface.

Original Title:	Eintauchen ins tiefe Blau
Year:	2025
Produced by:	nautilusfilm
Partners:	ARD, WDR, arte, NDR, SWR, ORF



1. Lakes of the Mountains

This episode takes viewers on an exciting journey to the lakes of the Alps, Upper Austria, and the northern foothills of the Alps. From the Frillensee, Germany's coldest swimming lake, to the vast depths of Lake Constance, the documentary uncovers the hidden underwater worlds of these lakes. Using underwater cameras and drones, divers capture unique footage of both animal life and surprising remnants of human civilization. The film explores the geological and zoological wonders of each lake, showcasing rare species like the mysterious crustaceans of a disappearing lake, sulfur-eating creatures, and the spawning grounds of mighty pikes, colorful sticklebacks, and the ancient burbot.

2. Lakes of the Coasts

This episode introduces the most beautiful lakes in northern Germany, from the Müritz to the volcanic crater lakes in the Eifel. Underwater cameras and drones capture stunning footage of hidden aquatic life and historical remnants. The documentary delves into the creation of these lakes and their role in the surrounding flat landscapes. It highlights lakes shaped by ice ages and human hands, many of which are wildlife paradises. Stories include the courtship rituals of bitterlings, and the bubbling gases beneath the Eifel's volcanic lakes.